



HATTA HILLS RUN COURSE MAPS

Start / Finish: Hatta Sports Club, 7am Start

The below course maps can also be downloaded in the following formats by clicking on their respective links



21.1km: <https://www.plotaroute.com/route/1441882>

10km: <https://www.plotaroute.com/route/1441873>

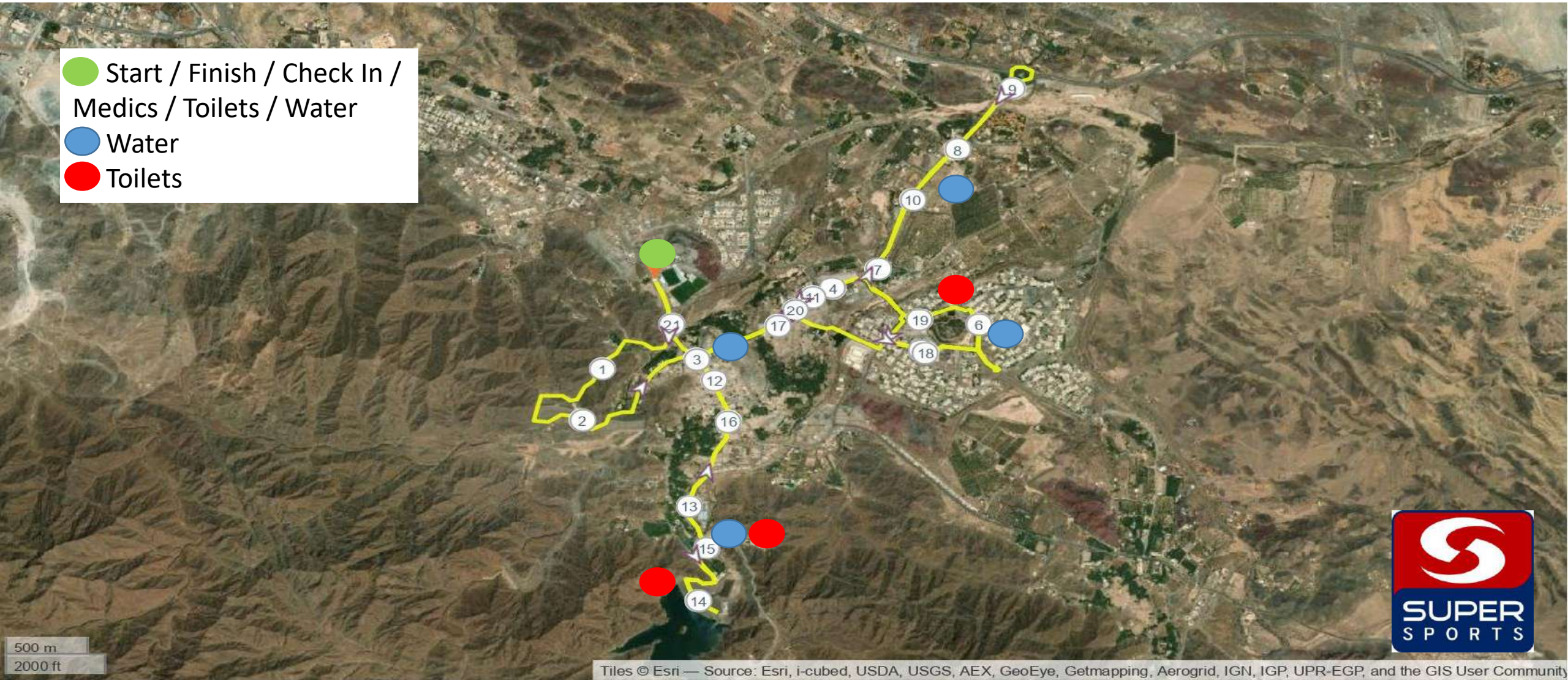
5km: <https://www.plotaroute.com/route/1435110>

3.5km: <https://www.plotaroute.com/route/1435060>



HATTA HILLS 21.1km

- Start / Finish / Check In / Medics / Toilets / Water
- Water
- Toilets



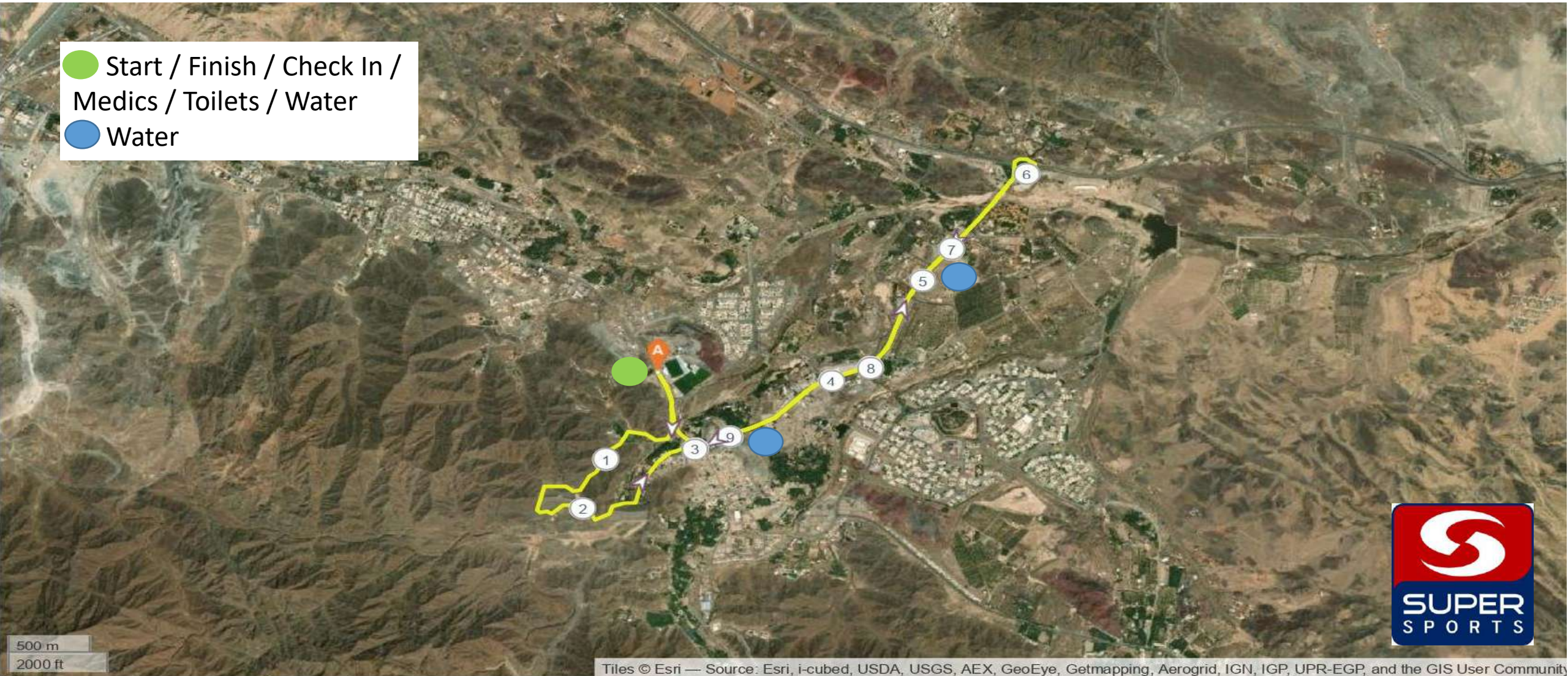
Tiles © Esri — Source: Esri, i-cubed, USDA, USGS, AEX, GeoEye, Getmapping, Aerogrid, IGN, IGP, UPR-EGP, and the GIS User Community





HATTA HILLS 10km

- Start / Finish / Check In / Medics / Toilets / Water
- Water



Tiles © Esri — Source: Esri, i-cubed, USDA, USGS, AEX, GeoEye, Getmapping, Aerogrid, IGN, IGP, UPR-EGP, and the GIS User Community





HATTA HILLS 5km

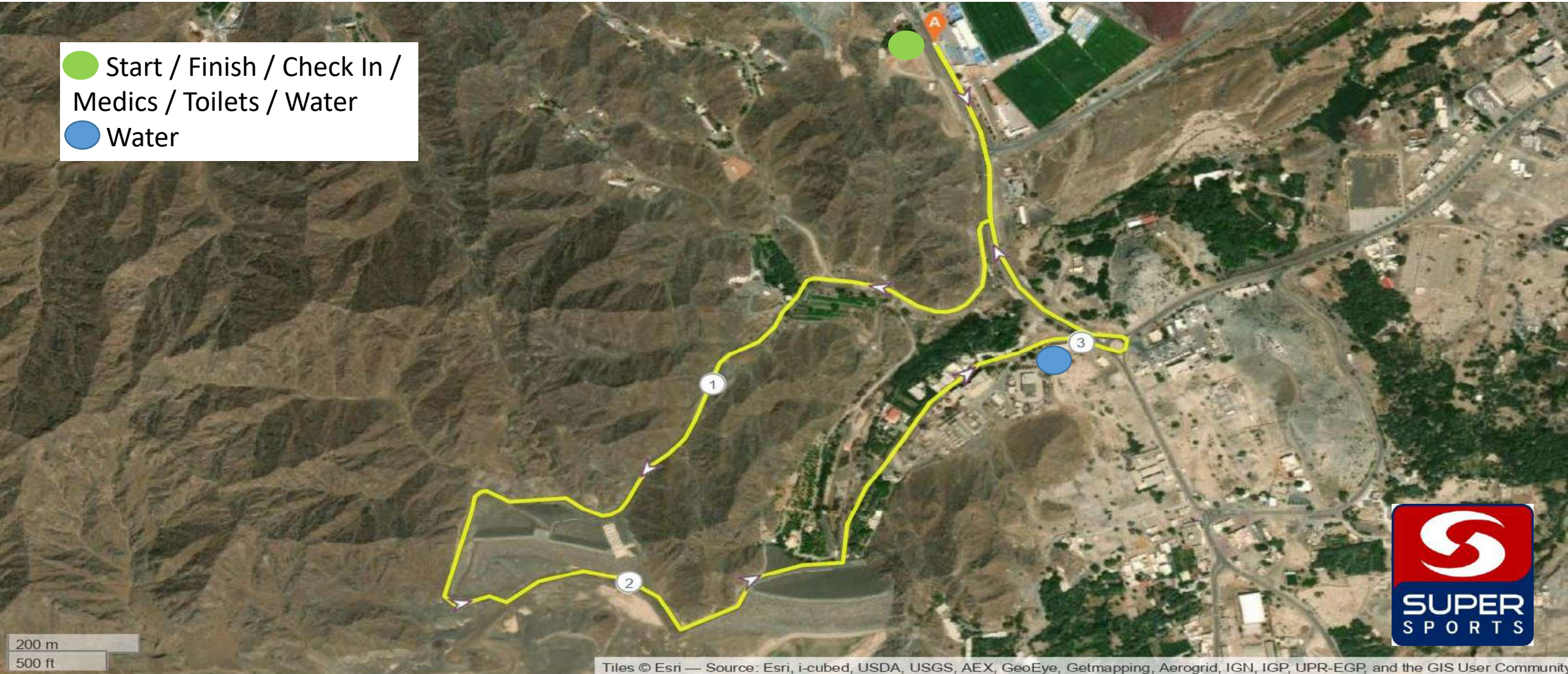
- Start / Finish / Check In / Medics / Toilets / Water
- Water





HATTA HILLS 3.5km

- Start / Finish / Check In / Medics / Toilets / Water
- Water



Tiles © Esri — Source: Esri, i-cubed, USDA, USGS, AEX, GeoEye, Getmapping, Aerogrid, IGN, IGP, UPR-EGP, and the GIS User Community

396 m

341 m

1

2

3