

# PLAN YOUR DAY



The Dubai Eye 103.8 UAE Road Cycling Championship Abu Dhabi Stage is taking place on Friday 26<sup>th</sup> January 2018.

Here is all you need to know

Let's start with a few bike and safety rules:

- Only registered riders can participate
- No number = no ride
- No helmet = no ride
- No tri bars or aero bars (UCI regulations)

## Race Kit Collection

The event pack collection point will be in the race village Abu Dhabi Louvre adjacent carpark from 05:00 to 06:00 AM same race day.

<https://www.google.com/maps/place/>

If your event pack is being collected by another person, you must provide the collector with a printout of your confirmation email /receipt and a copy of their ID.

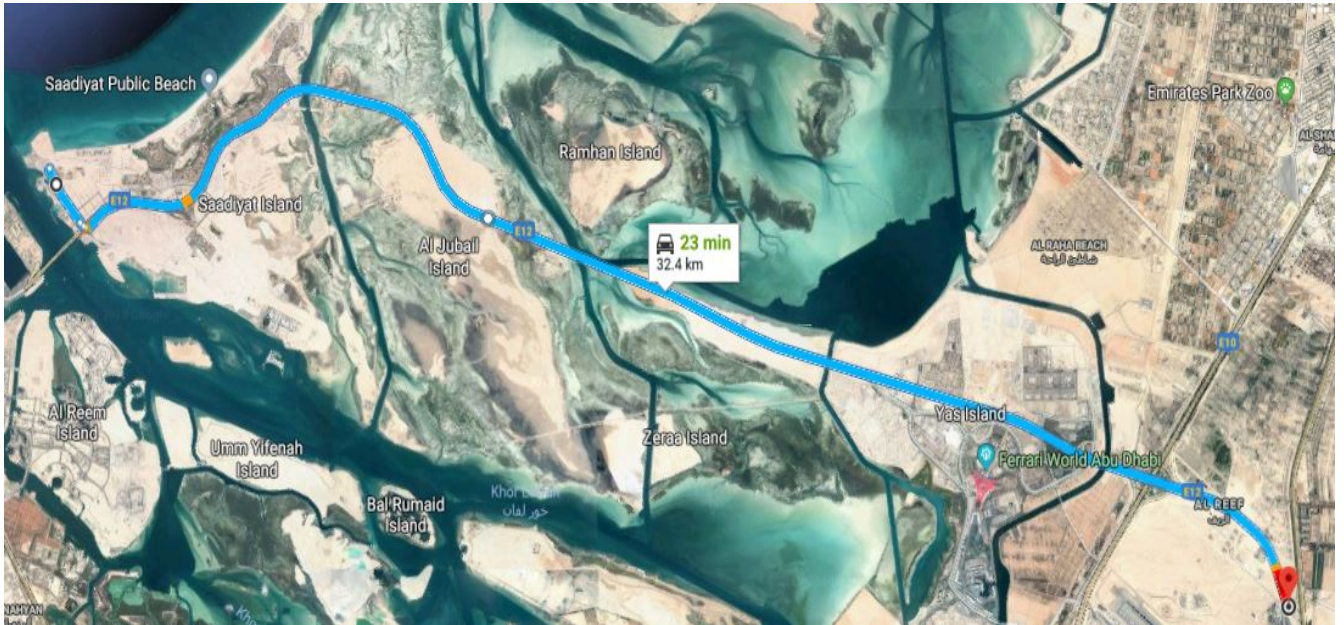
## The Race Kit Contains

- Timing Chip - ALL timing chips are ProChips. The chip **must** be fixed to the **front fork** of your bicycle.
- If the chip is placed anywhere else (e.g. on the wrist, handle bars, seat or any other place) the time **will not** be recorded.
- Challenge Number - make sure that you pin your race number on your **BACK** clearly.

**No Number = No Ride**

# SEEDING & START ZONES

Riders should be in their start zone by **6 am**  
Positions within each start zone are on a **first-come-first-served** basis.  
The Dubai Eye 103.8 UAE Road Cycling Championship starts at **07:00 am sharp**.



## Start Time

Category	Start Time
Expat ( Men )	07:00
Emirates Men	07:05
Expat ( Women )	07:10
Emirates ( Women )	

# THE VILLAGE

## Arriving at Abu Dhabi Louvre (Adjacent carpark)

We request that all cyclists arrive by 5:00am.  
There are two carparks for cyclists located opposite the race village.



Race Village: <https://www.google.com/maps/place/>  
Cyclist Car Parking: <https://www.google.com/maps/place/>

## The Race Village

The Race Village will have a number of different vendors and activities to keep cyclists and non-cyclists entertained before, during, and after the Cycle Championship.

There will be water, food, rest areas, and Cycle Championship sponsors at the village.

The portable toilets are located next to the race village. However, showers and changing room facilities will not be available on site due to a change in start position.

Two Technical support cars will be with cyclists on the route to assist with minor bicycle issues/small problems as well as Hydration supply.

PLEASE DO NOT ARRIVE AND ANTICIPATE A FULL SERVICE. THIS WILL NOT BE POSSIBLE.

**The participants are responsible for their bikes safety**

# THE COURSE

## The Dubai Eye 103.8 UAE Road Cycling Championship course (START & FINISH SAME PLACE)

The start of the race is starting at Abu Dhabi Louvre, as per below:

- Starting from Abu Dhabi Louvre past Yas Island
- Back to Abu Dhabi Louvre
- Race will be one lap 64 KM

Abu Dhabi Police will be managing rolling road closure during the race, caution that the roads will not be fully closed. You can easily follow the police vehicles or commissaries motorbikes.

NMC Ambulance will be positioned in the Race Village as well as support the main categories, following the Police Rolling Closure.

Support cars will follow the last riders. If you decide to retire from the ride, flag down one of these vehicles. Only once the vehicle is full will it return to the starting point.

Riders, which will be 04 KM late, they will have to use the shuttle bus for their safety.

Personal support and seconding drivers are **NOT** permitted. Anyone seen using an unauthorized vehicle on the course will be immediately disqualified. Should your team need accreditation for an official vehicle please email the Event Director on [info@uaecycf.ae](mailto:info@uaecycf.ae)

### Refreshment Stations

There will be 4 refreshment stations on the road. All stations will have water, and food available:

- 10KM
- 18KM
- 29KM
- 40KM

There will also be refreshments at the race village.

The event organizer will provide a complimentary light breakfast for all the cyclists at the Race Village after the race.

### Hot Spots

Please invite all your friends and family to come out and support the cyclists. Everyone is welcome to join us at the Race Village at Abu Dhabi Louvre and enjoy the refreshments on offer.

## Things To Watch Out For

**Other riders:** Keep a mindful eye on what is happening around you and remember to signal your intentions.

**Road conditions:** Conditions are generally fantastic but a pump and spare tube are essential on the race. The weather can be unpredictable this time of year so keep an eye out for puddles and standing water.

**Road obstructions:** The route are generally pristine however there are a few bumps and storm water grates that you need to keep an eye out for, remember to call out obstacles when riding in a bunch.

**Note:** When registering for the UAE National Championships, each rider has agreed to the event waiver and rules. Copies of the waiver can be found on the event registration page on [www.hopasports.com](http://www.hopasports.com)

# PRIZE PRESENTATION

## Presentations

The Presentations will be at 9.30am

- Medal + Trophy + Winners Jersey for 1<sup>st</sup> place in each category i.e., Emirati Male and Female category & Expatriate Male and Female category.
- Medals 1<sup>st</sup>, 2<sup>nd</sup>, 3<sup>rd</sup> for other age categories for Emirati Male and Female category & Expatriate Male and Female category.
- All participants will receive a commemorative medal and certificate with their time.

