



## Fellow Cyclists,

Welcome to the 8<sup>th</sup> edition of the Spinneys Dubai 92 32.5km Build-Up Ride 1 taking place on **Friday 8<sup>th</sup> September 2017**.

This is where your journey begins as we approach the Spinneys Dubai 92 Cycle Challenge in December and we wish you the best of luck!

A few things that you need to know:



MOHAMMED BIN RASHID AL MAKTOUM CITY  
DISTRICT ONE

**Distance:** The Spinneys Dubai 92 Build-Up Ride 1 is **32.64km**.

**Times:** Two starting times are available depending on the speed **you** think you can do.  
- 5:30am - 5:40am; +37 km per hour ave & above  
- 6:30am - 6:40am; -37 km per hour ave & below

**Location:** Mohammed Bin Rashid Al Maktoum City - District One Cycling and Running Track

**The Course:** A 32.64km lap course. Please [click here](#) to view the course.

- Lap 1 - 8.26km
- Lap 2 - 8.26km
- Lap 3 - 8.26km
- Lap 4 - 7.86km

If you would like to download the route onto your [Wahoo](#) or any other GPS Bike Computer as a **GPX** file please [click here](#) (Download 5 kb Zip File) or Via [RideWithGPS](#).



**Parking:** Recommended parking for all cyclists is at the [Falcon Heritage Center](#) (signposted) and from there you can cycle to the start of the Build-Up ride - allow an extra ten minutes for this. Marshals will be at hand to help.



**Time Trial and Aero Bars:** These are permitted in this event but will NOT be permitted in the Spinneys Dubai 92 Cycle Challenge on 15th December.

**REMEMBER:** These bars are **NOT** bunch friendly, use with extreme caution. We advise, you avoid using while in any form of groups.

**The track:** Mohammed Bin Rashid Al Maktoum City - District One Cycling and Running Track is wide and there will be passing during the ride. **Stay to the right** of the path so faster riders can pass on the left.

**Timings chip:** Chip collection is available at [Revolution Cycles Dubai](#) on:

- Wednesday 6<sup>th</sup> September 12:00pm - 5:00pm

- Thursday 7<sup>th</sup> September 12:00pm - 5:00pm

Please present a copy of your ID when collecting your chip. If you are collecting for someone else please present a copy of their ID and you will have to sign for it with your contact details.

If you already own a classic (yellow) champion timing chip this can be used as normal.

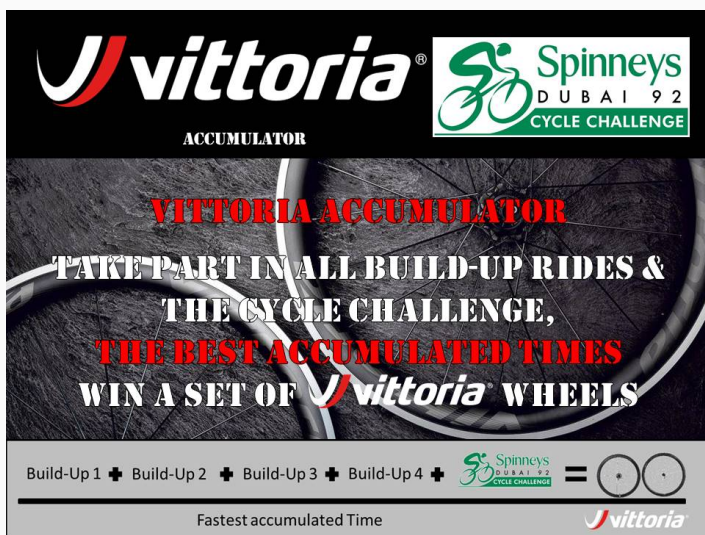


**Water:** There are no water stations on the track but you will be able to refill your water bottles in the Cycle Village.

After you have completed your ride, please feel free to help yourself to fruit and water that has been provided thanks to Spinneys.



**Finish Line:** The finish line is 200m before the start line; to exit after the finish line please keep left. It is your responsibility to keep track of your laps and to know when you have completed 32.64km.



## Something new....The Revolution Accumulator:

We are calculating and keeping track of how long it takes you to do all the Spinneys Build-Up rides and the Spinneys Dubai 92 Cycle Challenge. This will be your accumulated time and can lead to winning you a set of Vittoria Qurano Carbon Wheels.

Incase of an emergency call :

**056 211 4374**

Please quote your location - location markers are on sign posts around the track



Thanks to **Revolution Cycles Dubai** who will be on site with basic mechanical support.

This is where your journey begins as we approach the Spinneys Dubai 92 Cycle Challenge in December and we wish you the best of luck!

See you all bright and early on Friday morning!

**NO HELMET NO RIDE!**

For information on all events in Dubai, download the Event's Security Committee App [here](#)



Available on the iPhone  
**App Store**



ANDROID APP ON  
**Google play**



## Thanks to all our Sponsors of the Spinneys Dubai 92 Cycle Challenge

### Title Sponsors



### Under The Auspices Of



### Official Supporters



### Official Bike Retailer



### Secure Bike Park Partner



### Official Indoor Training Partner



### Support Sponsors



[Facebook](#)



[Twitter](#)



[Instagram](#)



[Website](#)



[Email](#)

**Our mailing address is:**

Promoseven Sports Marketing, Emarat Atrium Building, Sheikh Zayed Road, Dubai, United Arab Emirates.

P.O Box 6835 | info@cyclechallenge.ae | 04 3210 008

Want to change how you receive these emails?  
You can [update your preferences](#) or [unsubscribe from this list](#)